

# Introduction to Prairie Butterflies and Moths

basic ID and natural history



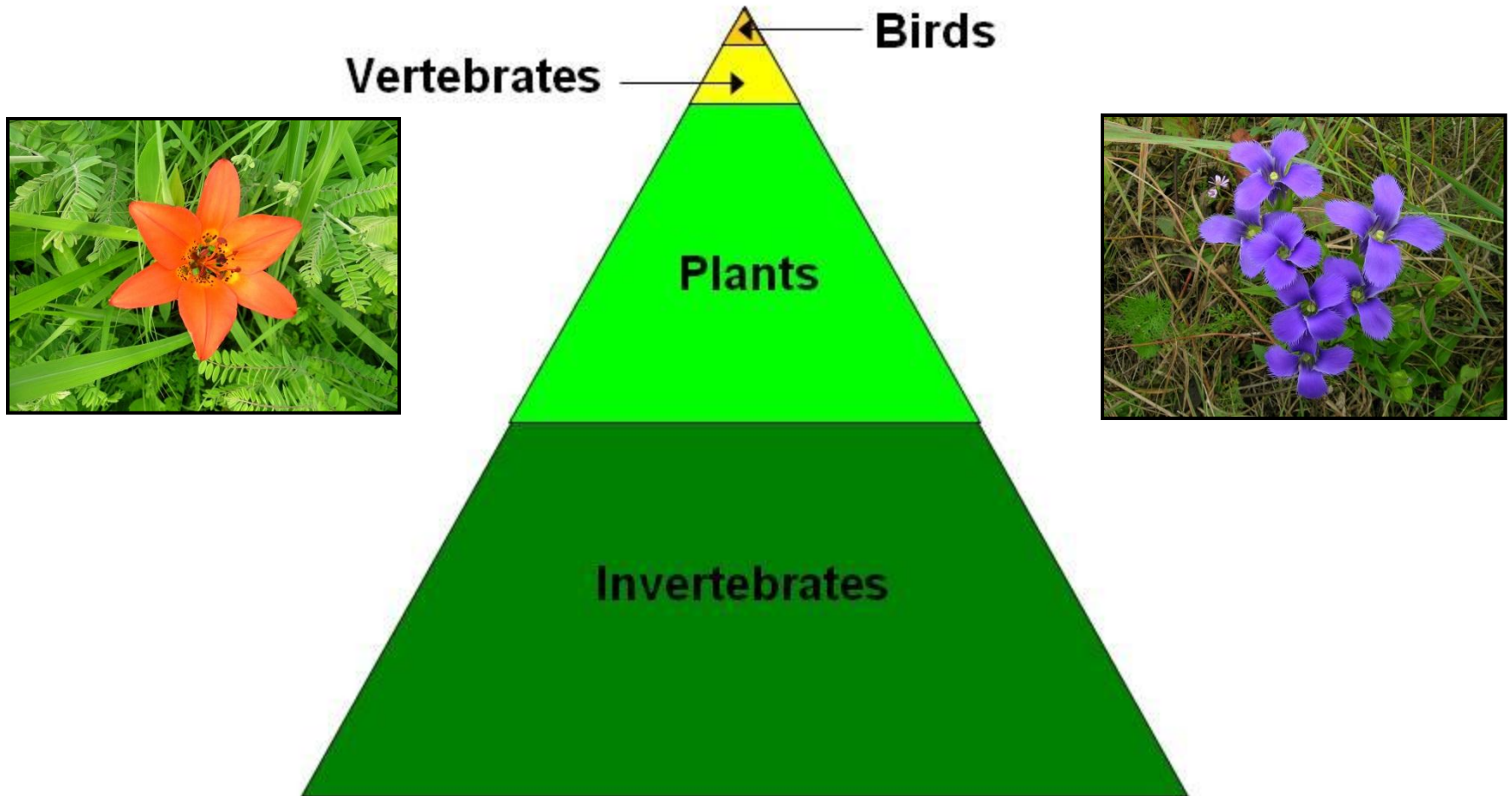
Armund Bartz 

# Discussion Overview

- Why should we care??
- Critter introduction
- Getting started, ID, NH, Survey tips
- Practical management guidance?



# Biodiversity in Grasslands





# Critter Introduction

- **3 sp. of “grass” skippers:**  
Dusted, Ottoe, Leonard’s
- **2 “flower” moth species:**  
leadplant FM, Northern FM

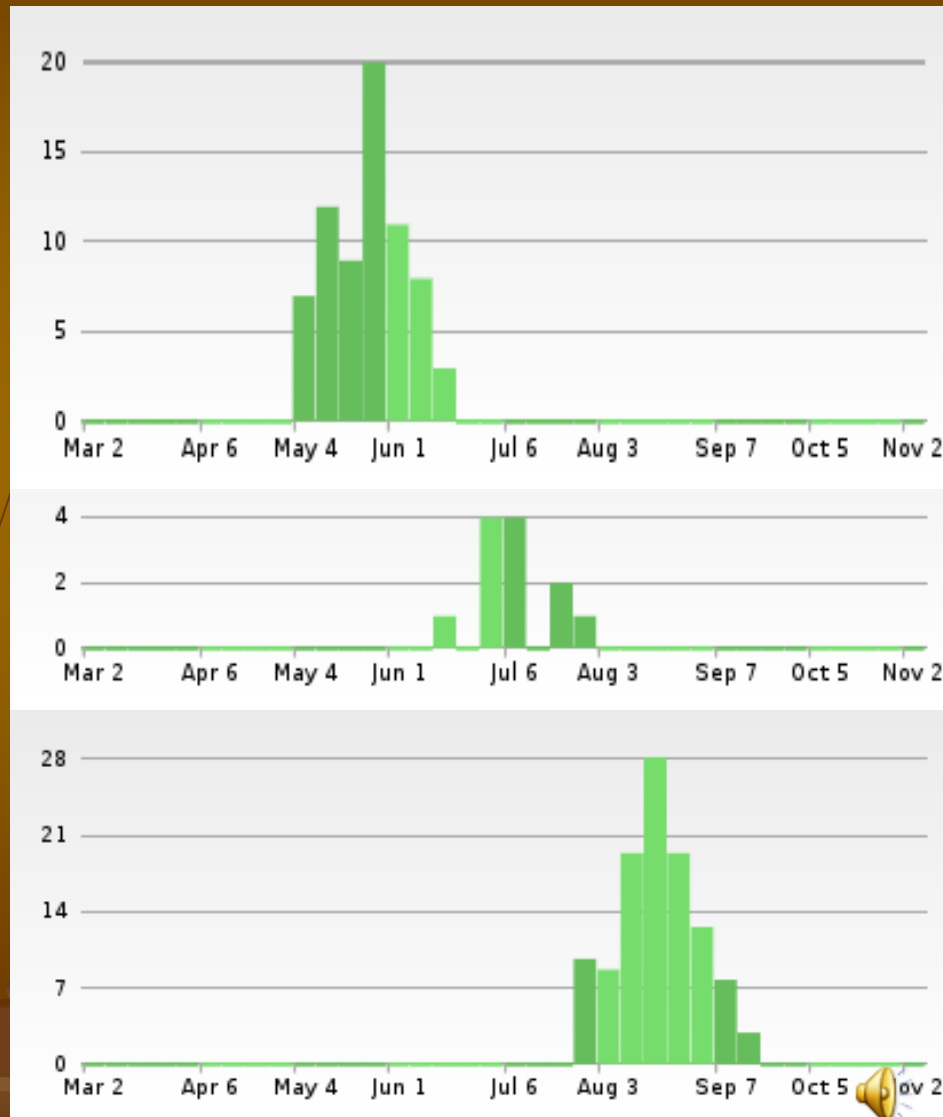




# Getting Started-flight periods!!

Weekly sightings of skippers in WI

- Dusted skipper  
May 4-June 15
- Ottoe skipper  
June 20-July 30
- Leonard's skipper  
August 1-Sept 15



# Identification Features

- “Upper” side

Stigma  
(black mark)



# Identification Features

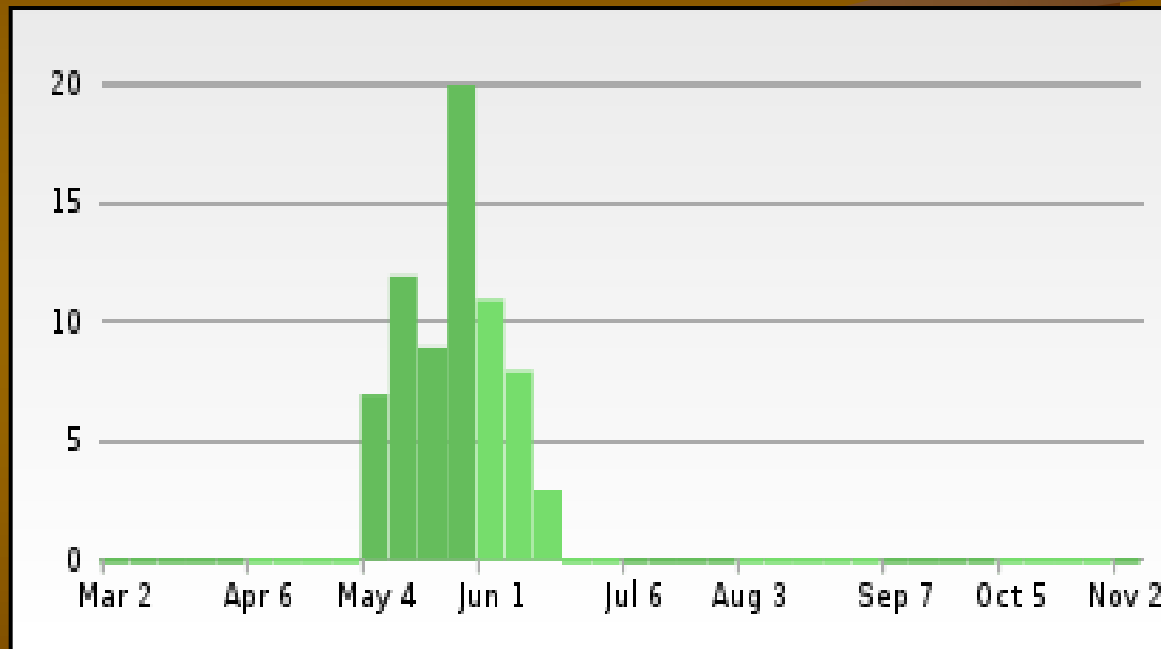
- “Under” side





# Dusted Skipper flight period

*Atrytonopsis hianna*



Weekly sightings of dusted skipper in WI

May 4-June 15



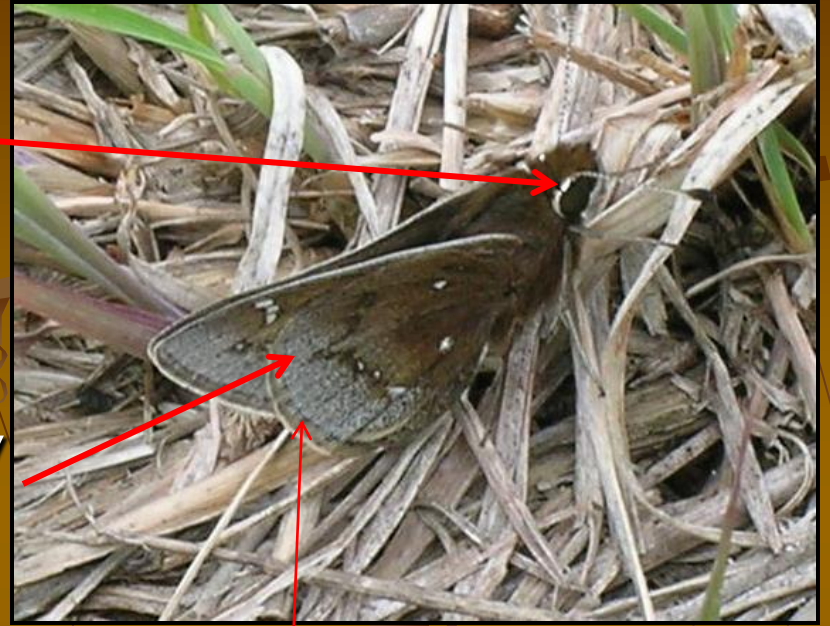
# Dusted Skipper ID

White eyebrow

Underside “frosted grey”  
toward rear

No checkering on outer margins

One look-a-like: Common roadside skipper



# Dusted Skipper ID





# Quiz



Mike Reese



# Quiz

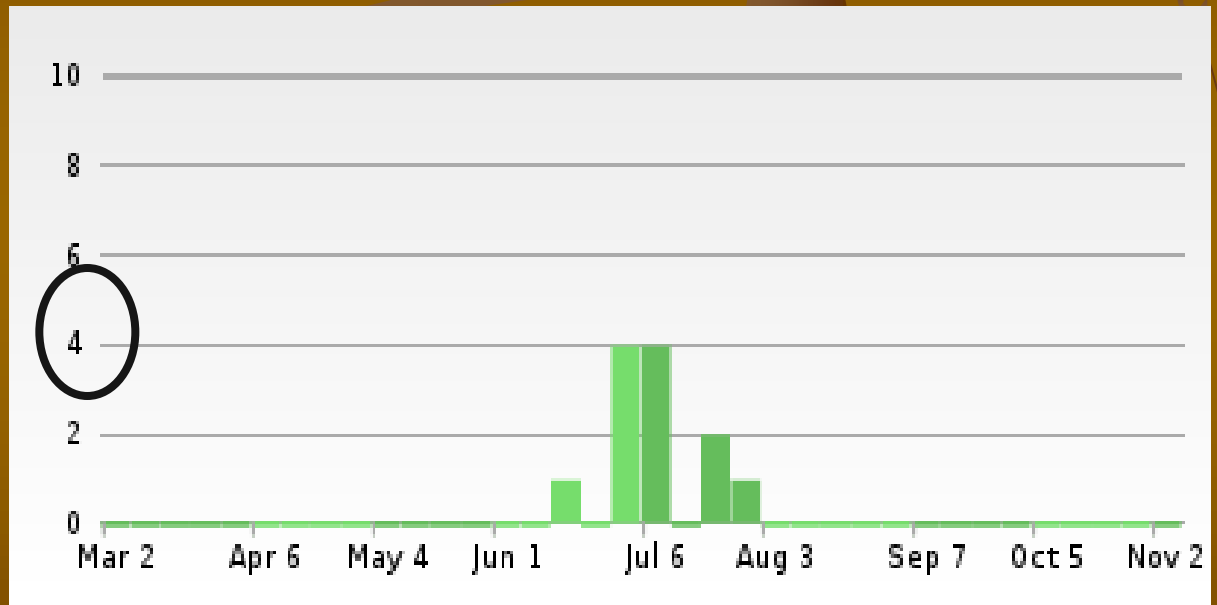
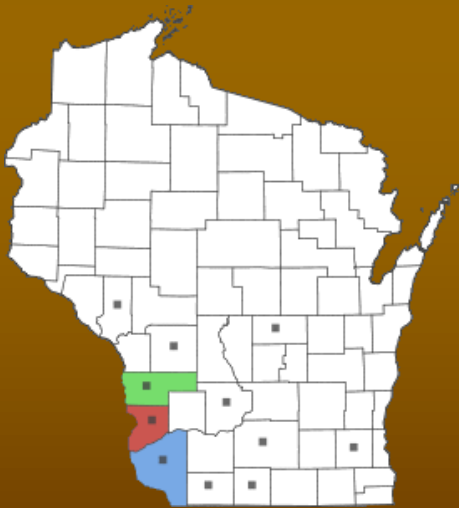


Mike Reese



# Ottoe Skipper flight period

## ~June 20-July 30



Weekly sightings of ottoe skipper in WI

■ Sighting ■ Photo ■ Museum specimen  
■ indicate historical record





# Ottoe Skipper ID

Upperside "stigma" surrounded by orange

Underside orange-yellowish without  
markings

One look-a-like: Delaware skipper



# Ottoe Skipper

Need to see  
“Upper” side!

Stigma  
Surrounded  
by orange



# Ottoe Skipper

*Hesperia ottoe*

Stigma surrounded by  
orange



underside without  
markings

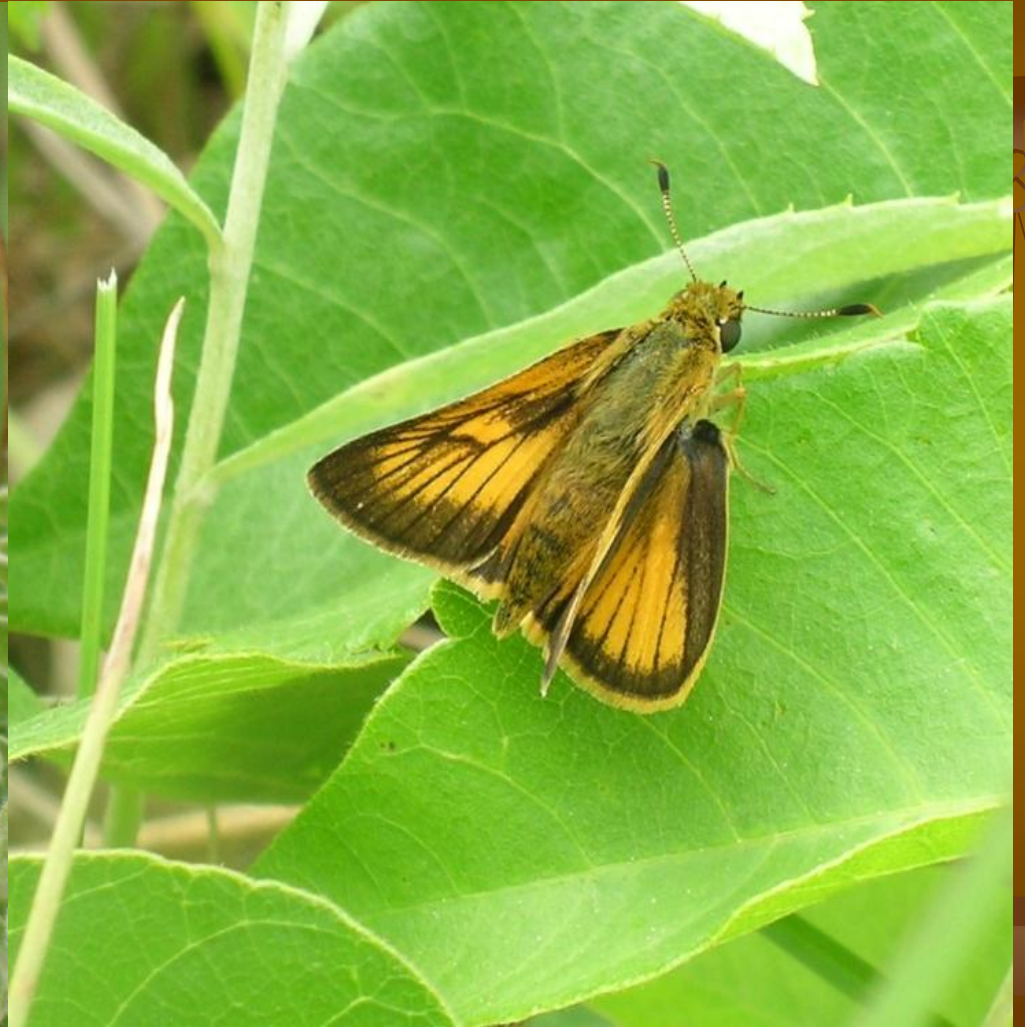


Photos by Mike Reese [wisconsinbutterflies.org](http://wisconsinbutterflies.org)





# Quiz





Mike Reese

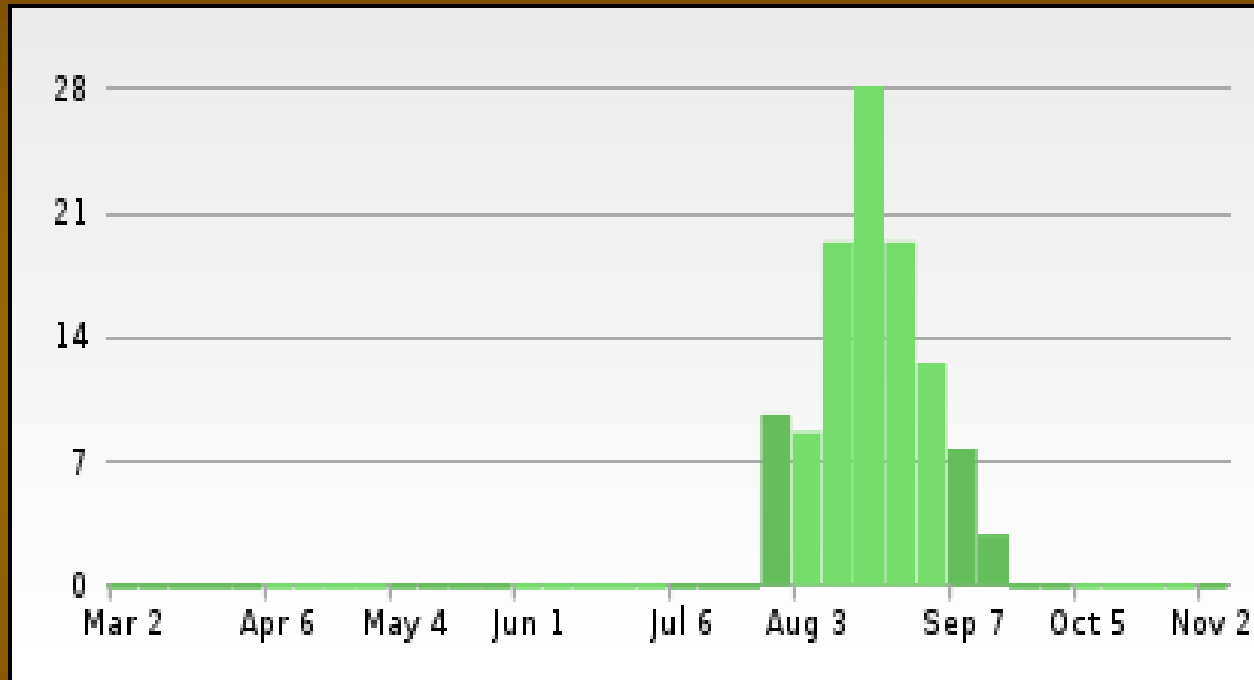


Mike Reese



# Leonard's Skipper

*Hesperia leonardus*



Weekly sightings for Leonard's Skipper

August 1-Sept 15

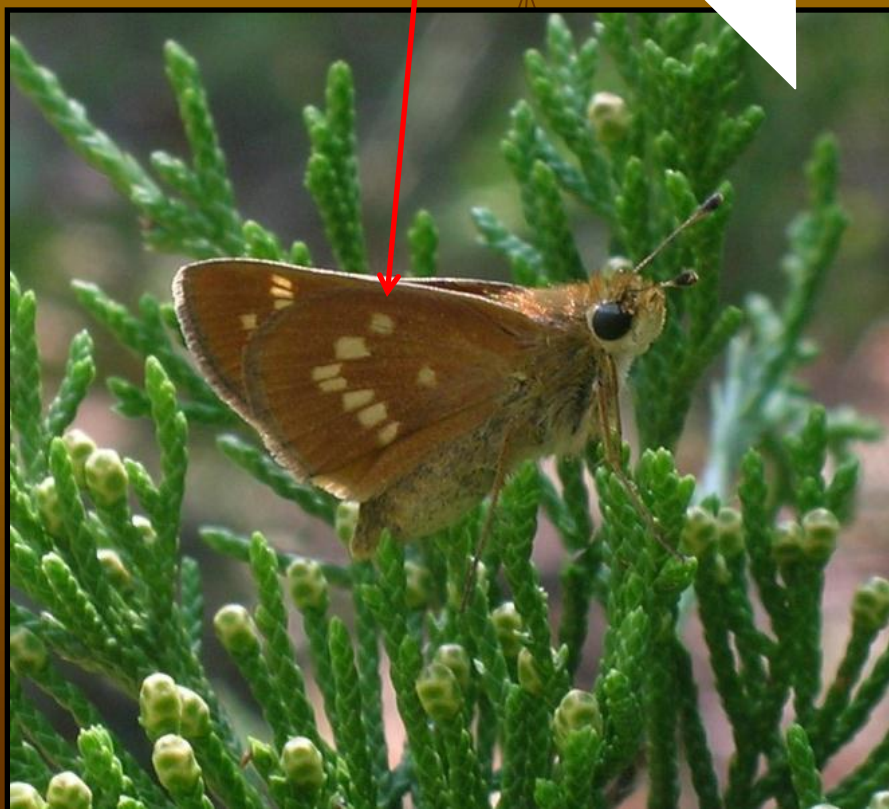




# Leonard's Skipper ID

*Hesperia leonardus*

- Need to see underside!!!
- white markings "pointing" ← toward rear









Worn individual with white  
markings pointing toward  
rear





# Northern Flower Moth

*Schinia septentrionalis*









# Northern Flower moth w/host: Sky blue aster







Leadplant Flower Moth  
*Schinia lucens*

Kyle Johnson













# Prescribed fire and inverts

- Precautionary principle
- Refugia-“lifeboating”

















Photo by Dean Edlin







Photo by Dean Edlin





**Contributions to the Understanding  
of Tallgrass Prairie-Dependent Butterflies and  
Moths (Lepidoptera) and their Biogeography  
in the United States**



by

**Eric H. Metzler, John A. Shuey, Leslie A. Ferge, Richard A.  
Henderson, and Paul Z. Goldstein**

**BUTTERFLIES**  
*through*  
**BINOCULARS**  
*The East*

A FIELD GUIDE TO THE BUTTERFLIES OF  
*Eastern North America*

JEFFREY GLASSBERG





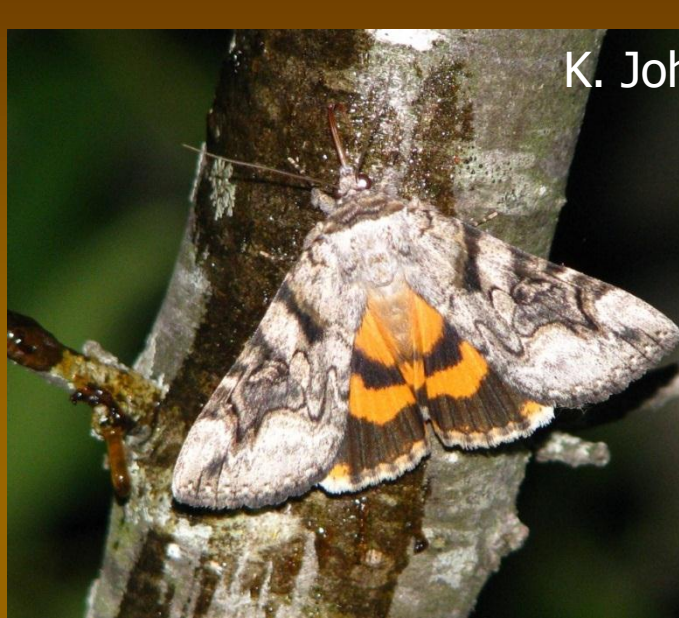
A silhouette of a thorny plant with several small, round flower heads is positioned on the right side of the frame. The background is a dramatic sunset sky with horizontal bands of orange, red, and purple clouds. The horizon is a dark silhouette of land. The word "Questions?" is written in a large, yellow, sans-serif font at the bottom center.

Questions?





# “Known” leadplant species



K. Johnson



K. Johnson



K. Johnson



MJ Hatfield







3 species of parasitoid wasps  
emerged from the galls of  
*Walshia amorphella*



Ichneumonidae:  
*Calliephialtes notandus*

*Walshia amorphella*  
Host plants: *Amorpha canescens*  
& *Amorpha fruticosa*



Photos and text by MJ Hatfield

